

## Technical Assistance

### Leak Detection

# California Rural Water Association



### Date

June 7 & 8, 2017  
Critical Zone Survey  
AR# 5229

Tim Healy/Leak Detection Specialist

### Water System

Lebec County Water District (1510051)  
323 Frazier Mountain Park Rd  
Lebec Ca 93243  
Michael Hightower  
"661-248-6872"



# Water System Inventory



Water System	Lebec County Water District
Street	323 Frazier Mountain Park Rd
City	Lebec Ca 93243
MHI (< \$49,191)	
Population	1100
Connections	312
Year Est.	1969
Flat Rate/Tiered	Flat Rate
Maps/As-builts/GIS	Limited Maps
Dirt Roads/Paved	Dirt Roads/Paved
Sewer/Septic	Septic
System Operator	Michael Hightower

Wells	Qty.	Avg. Depth		Surface Water				Treatment Plant			
	3										
Main Pipe	Size			Miles	Asbestos	Ductile Iron	Steel	Cast Iron	PVC (C-900)	CMLC	
	2	4	6	8	10	12	15-20				✓
Service	Size			Poly	Copper	Galvanized	HDPE	PVC	Driscoll	Other	
	½	¾	1	1½	2						✓
Valve	Size			Qty.	Gate	Butterfly	Globe	Check	Ball	Plug	
	2	4	6	8	10	12	?				✓
Hydrant	Size			Qty.	Wharf-Head	Blow-Off	Commercial		Residential	Meter	
	2	4	6	50							✓
Meter	Size			Qty.	AMR/AMI	P/D	Smart	Turbine	Compound	Mag	
	¾	1	1½	2	4	6	312				✓
Air Relief & Vacuum	Size			Qty.	Booster Pump & Hydro Pneumatic		Qty.	Storage Tanks		Qty.	
	¾	1	1½	2			10			5	19
Backflow Valve	Size			Qty.	Pressure Reducing Valve			Size		Qty.	
	¾	1	1½	2				4	50	2	4

Comments: The maps/asbuilts were taken by a former employee so they have very limited mapping on hand. The water system has limited amount of isolation valves. The operators change out meters as needed but most are older than 15 yrs. The water systems pressure ranges from 28 to 220 PSI. The water service lines from the mains are all galvanized piping.

Recommendations: Install isolation valves to limit the amount of customer outages due to repairs. Replace meters with smart meters and upgrade to ARM system. Install PRV's in zones of very high pressure. Increase storage capacity. Install SCADA for remote area system facilities.

## Daily Log

Water System:	Lebec County Water District	California Rural Water Association
Leak Detection Team Member:	Tim Healy	Leak Detection Specialist
Equipment Used:	FCS Correlator - FCS Acoustic Ground Mic - Data Loggers – Google Map/System Map	
System PSI:	28-220	Pressure Zone: 3?

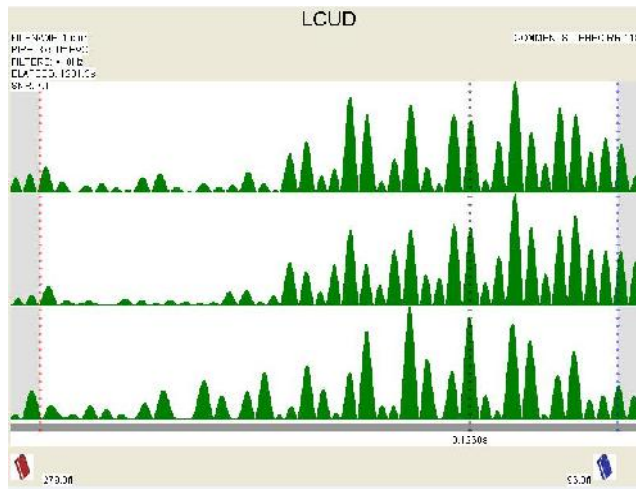
[illegible]

# Leak Report

Date:	June 7 & 8 2017					
System:	Lebec County Water District					
Leak Detection members:	Tim Healy					
Equipment Used:	FCS Correlator and FCS Acoustic Ground Mic					
Map Reference:	Google Map/System Map					
Street and/or Block Numbers: Lebec Rd, North Rd, No Name Rd, Under Interstate 5, Wainright Ct, Chimney Canyon Rd, Valley View Rd and Castac Rd						
Leak Number	Address of Suspected Leak	Utility or Customer (U or C)	Leak Pinpointed (Y or N)	Leak to be Rechecked (Y or N)	Leak Repaired (Y or N)	Not a Leak? (Date)
N/A						
		Meters / Curb Stop	Hydrants	Valves	Test Rods	Other
Indicate Number of Manual Listening Points Used		10	5	11	0	
Indicate Number of Leak Noise Loggers Listening Points Used		0	0	0	0	
Miles of Mains Surveyed:		1.15	Survey Time: (Hours)		10	
Number of Leaks Suspected:		0	Rechecked: (Numbers)		0	
Number of Leaks Pinpointed:		0	Pinpointing Time: (Hours)		0	
Remarks: No leaks found in surveyed areas						

Please Note: This information is provided by "CRWA" as EDUCATIONAL and is NOT intended to replace the advice and direction given by your Regulator.

# Leak Detection Survey Results



**Survey Graph**

The Correlator program allows for a "**Snapshot Option**". When the snapshot button is pressed during a correlation, the snapshot feature effectively enables the operator to compare noise levels at different points during the correlation process. When a leak is detected, the graph will have a peak in the same spot and will be located in the same spot on all snapshots. This will indicate the presence of a leak.

**The correlation has detected a "*Leak(s)*".**

X

The Correlator displays a peak in all snapshots graphs in the same spot but is not leak due too:

- ☒ Water passing through a meter.
- ☐ Running pumps.
- ☐ Electrical (Transformer).
- ☐ Illegal service.

**The correlation has detected "*No leak(s)*".**

The Correlator program snapshots are all differ in graph peaks, this indicates flow due to pumping, pressure surges or momentary use of water through meter(s).

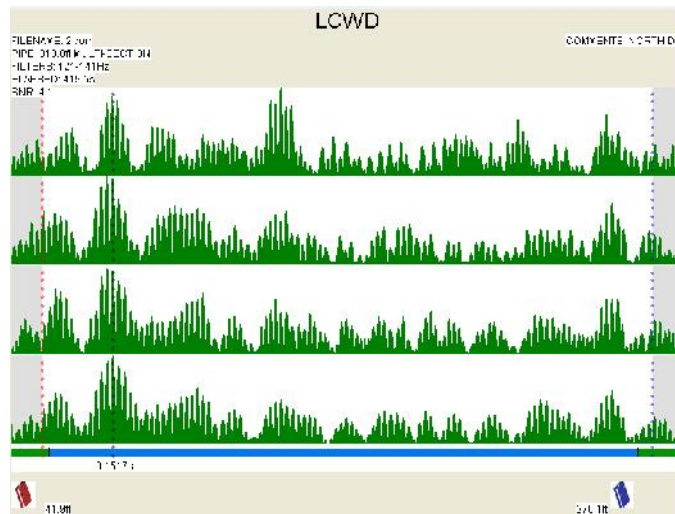
**The correlation has detected "*No leak(s)*".**

The Correlator program displays a "**Center Correlation**". The graph peak is in the center of the screen with equal footage on each side indicates the program sensor at a 50/50 point hears no sounds.

**The correlation has detected "*No leaks*".**

**Comments:** No leaks found

# Leak Detection Survey Results



## Survey Graph

The Correlator program allows for a "**Snapshot Option**". When the snapshot button is pressed during a correlation, the snapshot feature effectively enables the operator to compare noise levels at different points during the correlation process. When a leak is detected, the graph will have a peak in the same spot and will be located in the same spot on all snapshots. This will indicate the presence of a leak.

**The correlation has detected a "*Leak(s)*".**

The Correlator displays a peak in all snapshots graphs in the same spot but is not leak due too:

- ☐ Water passing through a meter.
- ☐ Running pumps.
- ☐ Electrical (Transformer).
- ☐ Illegal service.

**The correlation has detected "*No leak(s)*".**

X

The Correlator program snapshots all differ in graph peaks, this indicates flow due to pumping, pressure surges or momentary use of water through meter(s).

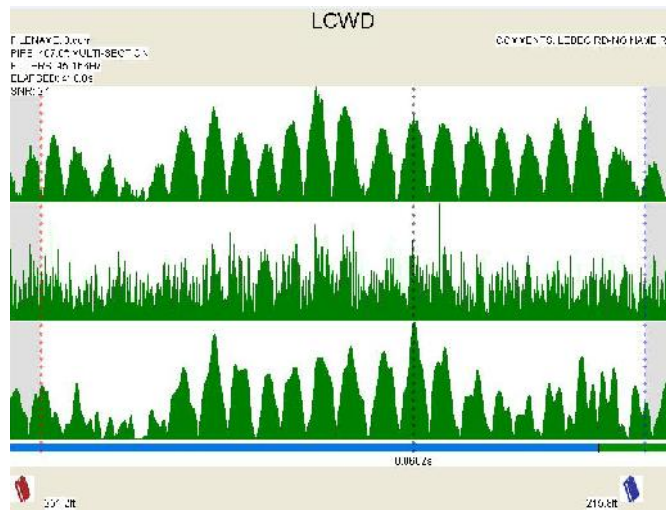
**The correlation has detected "*No leak(s)*".**

The Correlator program displays a "**Center Correlation**". The graph peak is in the center of the screen with equal footage on each side indicates the program sensor at a 50/50 point hears no sounds.

**The correlation has detected "*No leaks*".**

**Comments:** No leaks found

# Leak Detection Survey Results



**Survey Graph**

The Correlator program allows for a "**Snapshot Option**". When the snapshot button is pressed during a correlation, the snapshot feature effectively enables the operator to compare noise levels at different points during the correlation process. When a leak is detected, the graph will have a peak in the same spot and will be located in the same spot on all snapshots. This will indicate the presence of a leak.

**The correlation has detected a "Leak(s)".**

The Correlator displays a peak in all snapshots graphs in the same spot but is not leak due too:

- ☐ Water passing through a meter.
- ☐ Running pumps.
- ☐ Electrical (Transformer).
- ☐ Illegal service.

**The correlation has detected "No leak(s)".**

X

The Correlator program snapshots all differ in graph peaks, this indicates flow due to pumping, pressure surges or momentary use of water through meter(s).

**The correlation has detected "No leak(s)".**

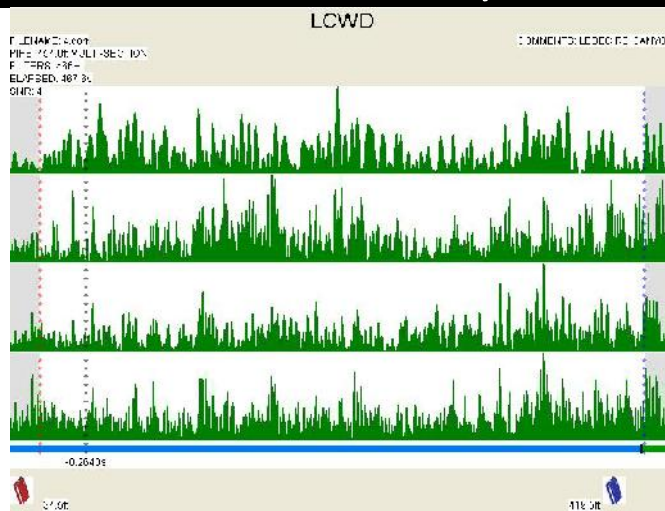
The Correlator program displays a "**Center Correlation**". The graph peak is in the center of the screen with equal footage on each side indicates the program sensor at a 50/50 point hears no sounds.

**The correlation has detected "No leaks".**

**Comments:** No leak found



# Leak Detection Survey Results



## Survey Graph

The Correlator program allows for a "**Snapshot Option**". When the snapshot button is pressed during a correlation, the snapshot feature effectively enables the operator to compare noise levels at different points during the correlation process. When a leak is detected, the graph will have a peak in the same spot and will be located in the same spot on all snapshots. This will indicate the presence of a leak.

**The correlation has detected a "Leak(s)".**

The Correlator displays a peak in all snapshots graphs in the same spot but is not leak due too:

- ☐ Water passing through a meter.
- ☐ Running pumps.
- ☐ Electrical (Transformer).
- ☐ Illegal service.

**The correlation has detected "No leak(s)".**

X

The Correlator program snapshots all differ in graph peaks, this indicates flow due to pumping, pressure surges or momentary use of water through meter(s).

**The correlation has detected "No leak(s)".**

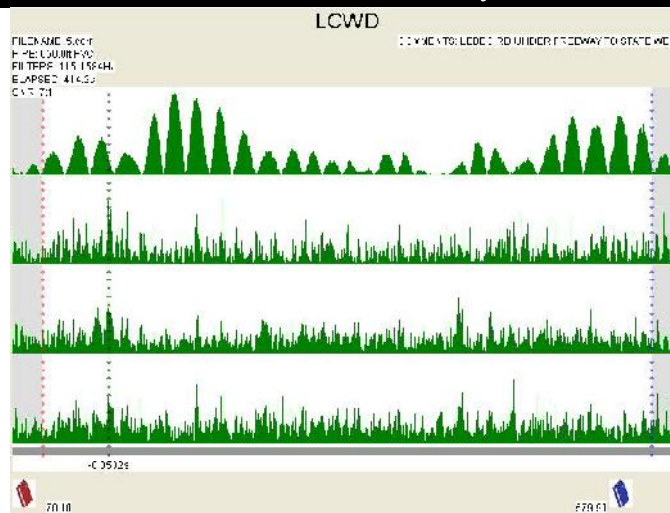
The Correlator program displays a "**Center Correlation**". The graph peak is in the center of the screen with equal footage on each side indicates the program sensor at a 50/50 point hears no sounds.

**The correlation has detected "No leaks".**

**Comments:** No leaks found



# Leak Detection Survey Results



**Survey Graph**

The Correlator program allows for a "**Snapshot Option**". When the snapshot button is pressed during a correlation, the snapshot feature effectively enables the operator to compare noise levels at different points during the correlation process. When a leak is detected, the graph will have a peak in the same spot and will be located in the same spot on all snapshots. This will indicate the presence of a leak.

**The correlation has detected a "Leak(s)".**

The Correlator displays a peak in all snapshots graphs in the same spot but is not leak due too:

- ☐ Water passing through a meter.
- ☐ Running pumps.
- ☐ Electrical (Transformer).
- ☐ Illegal service.

**The correlation has detected "No leak(s)".**

X

The Correlator program snapshots all differ in graph peaks, this indicates flow due to pumping, pressure surges or momentary use of water through meter(s).

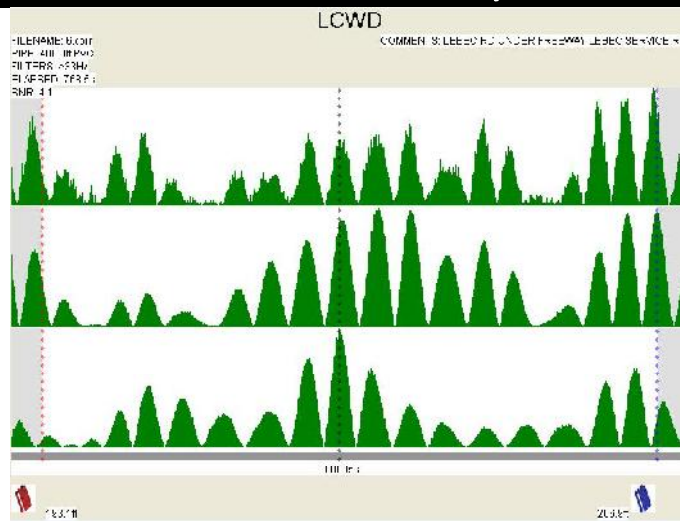
**The correlation has detected "No leak(s)".**

The Correlator program displays a "**Center Correlation**". The graph peak is in the center of the screen with equal footage on each side indicates the program sensor at a 50/50 point hears no sounds.

**The correlation has detected "No leaks".**

**Comments:** No leaks found

# Leak Detection Survey Results



## Survey Graph

The Correlator program allows for a "**Snapshot Option**". When the snapshot button is pressed during a correlation, the snapshot feature effectively enables the operator to compare noise levels at different points during the correlation process. When a leak is detected, the graph will have a peak in the same spot and will be located in the same spot on all snapshots. This will indicate the presence of a leak.

**The correlation has detected a "*Leak(s)*".**

The Correlator displays a peak in all snapshots graphs in the same spot but is not leak due too:

- ☐ Water passing through a meter.
- ☐ Running pumps.
- ☐ Electrical (Transformer).
- ☐ Illegal service.

**The correlation has detected "*No leak(s)*".**

X

The Correlator program snapshots all differ in graph peaks, this indicates flow due to pumping, pressure surges or momentary use of water through meter(s).

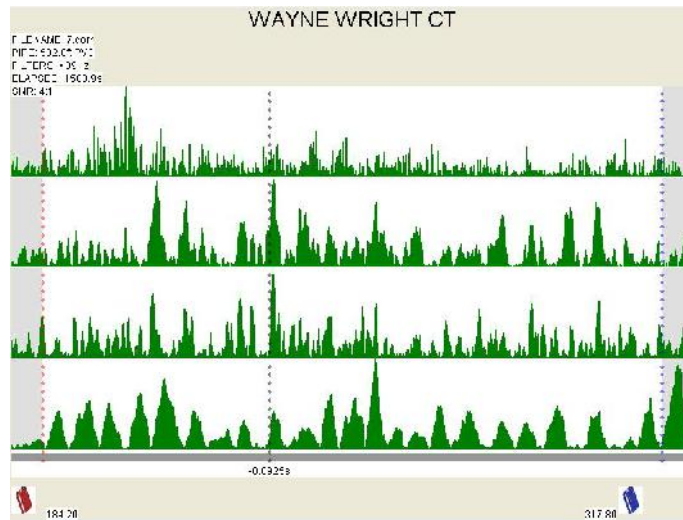
**The correlation has detected "*No leak(s)*".**

The Correlator program displays a "**Center Correlation**". The graph peak is in the center of the screen with equal footage on each side indicates the program sensor at a 50/50 point hears no sounds.

**The correlation has detected "*No leaks*".**

**Comments:** No leaks found

# Leak Detection Survey Results



## Survey Graph

The Correlator program allows for a "**Snapshot Option**". When the snapshot button is pressed during a correlation, the snapshot feature effectively enables the operator to compare noise levels at different points during the correlation process. When a leak is detected, the graph will have a peak in the same spot and will be located in the same spot on all snapshots. This will indicate the presence of a leak.

**The correlation has detected a "Leak(s)".**

The Correlator displays a peak in all snapshots graphs in the same spot but is not leak due too:

- ☐ Water passing through a meter.
- ☐ Running pumps.
- ☐ Electrical (Transformer).
- ☐ Illegal service.

**The correlation has detected "No leak(s)".**

X

The Correlator program snapshots all differ in graph peaks, this indicates flow due to pumping, pressure surges or momentary use of water through meter(s).

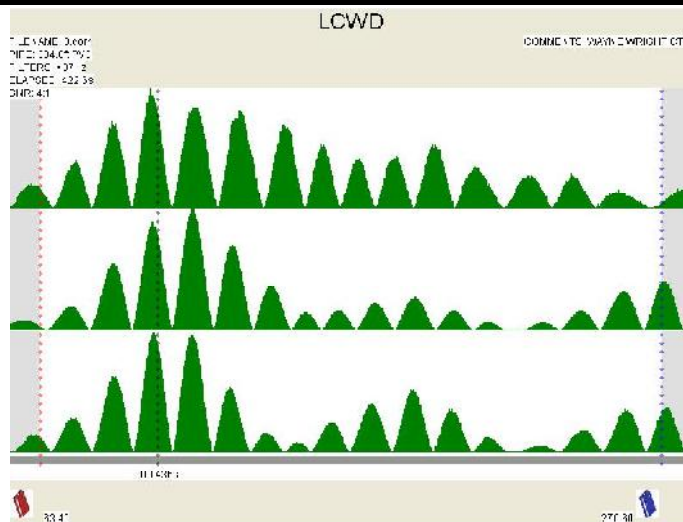
**The correlation has detected "No leak(s)".**

The Correlator program displays a "**Center Correlation**". The graph peak is in the center of the screen with equal footage on each side indicates the program sensor at a 50/50 point hears no sounds.

**The correlation has detected "No leaks".**

**Comments:** No leaks found

# Leak Detection Survey Results



## Survey Graph

The Correlator program allows for a "**Snapshot Option**". When the snapshot button is pressed during a correlation, the snapshot feature effectively enables the operator to compare noise levels at different points during the correlation process. When a leak is detected, the graph will have a peak in the same spot and will be located in the same spot on all snapshots. This will indicate the presence of a leak.

**The correlation has detected a "*Leak(s)*".**

The Correlator displays a peak in all snapshots graphs in the same spot but is not leak due too:

- ☐ Water passing through a meter.
- ☐ Running pumps.
- ☐ Electrical (Transformer).
- ☐ Illegal service.

**The correlation has detected "*No leak(s)*".**

X

The Correlator program snapshots all differ in graph peaks, this indicates flow due to pumping, pressure surges or momentary use of water through meter(s).

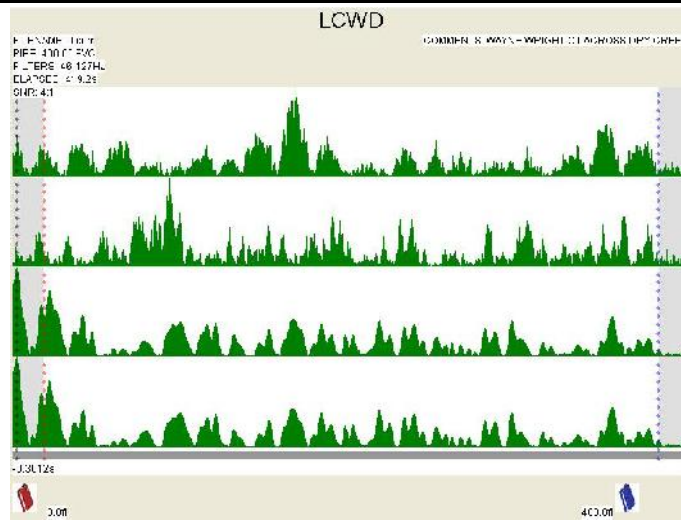
**The correlation has detected "*No leak(s)*".**

The Correlator program displays a "**Center Correlation**". The graph peak is in the center of the screen with equal footage on each side indicates the program sensor at a 50/50 point hears no sounds.

**The correlation has detected "*No leaks*".**

**Comments:** No leaks found

# Leak Detection Survey Results



**Survey Graph**

The Correlator program allows for a "***Snapshot Option***". When the snapshot button is pressed during a correlation, the snapshot feature effectively enables the operator to compare noise levels at different points during the correlation process. When a leak is detected, the graph will have a peak in the same spot and will be located in the same spot on all snapshots. This will indicate the presence of a leak.

**The correlation has detected a "*Leak(s)*".**

The Correlator displays a peak in all snapshots graphs in the same spot but is not leak due too:

- ☐ Water passing through a meter.
- ☐ Running pumps.
- ☐ Electrical (Transformer).
- ☐ Illegal service.

**The correlation has detected "*No leak(s)*".**

X

The Correlator program snapshots all differ in graph peaks, this indicates flow due to pumping, pressure surges or momentary use of water through meter(s).

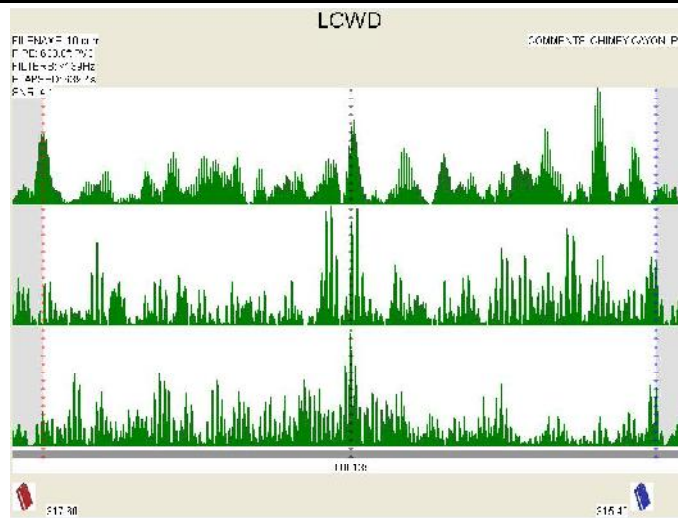
**The correlation has detected "*No leak(s)*".**

The Correlator program displays a "***Center Correlation***". The graph peak is in the center of the screen with equal footage on each side indicates the program sensor at a 50/50 point hears no sounds.

**The correlation has detected "*No leaks*".**

**Comments:** No leaks found

# Leak Detection Survey Results



**Survey Graph**

The Correlator program allows for a "**Snapshot Option**". When the snapshot button is pressed during a correlation, the snapshot feature effectively enables the operator to compare noise levels at different points during the correlation process. When a leak is detected, the graph will have a peak in the same spot and will be located in the same spot on all snapshots. This will indicate the presence of a leak.

**The correlation has detected a "*Leak(s)*".**

The Correlator displays a peak in all snapshots graphs in the same spot but is not leak due too:

- ☐ Water passing through a meter.
- ☐ Running pumps.
- ☐ Electrical (Transformer).
- ☐ Illegal service.

**The correlation has detected "*No leak(s)*".**

X

The Correlator program snapshots all differ in graph peaks, this indicates flow due to pumping, pressure surges or momentary use of water through meter(s).

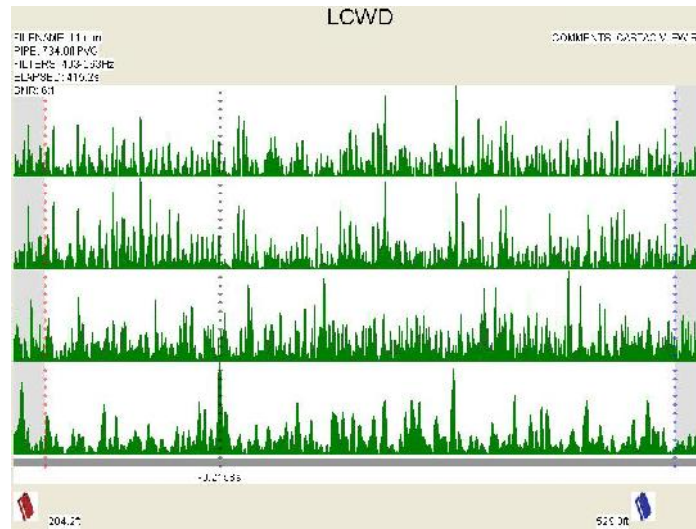
**The correlation has detected "*No leak(s)*".**

The Correlator program displays a "**Center Correlation**". The graph peak is in the center of the screen with equal footage on each side indicates the program sensor at a 50/50 point hears no sounds.

**The correlation has detected "*No leaks*".**

**Comments:** No leaks found

# Leak Detection Survey Results



## Survey Graph

The Correlator program allows for a "**Snapshot Option**". When the snapshot button is pressed during a correlation, the snapshot feature effectively enables the operator to compare noise levels at different points during the correlation process. When a leak is detected, the graph will have a peak in the same spot and will be located in the same spot on all snapshots. This will indicate the presence of a leak.

**The correlation has detected a "Leak(s)".**

The Correlator displays a peak in all snapshots graphs in the same spot but is not leak due too:

- ☐ Water passing through a meter.
- ☐ Running pumps.
- ☐ Electrical (Transformer).
- ☐ Illegal service.

**The correlation has detected "No leak(s)".**

X

The Correlator program snapshots all differ in graph peaks, this indicates flow due to pumping, pressure surges or momentary use of water through meter(s).

**The correlation has detected "No leak(s)".**

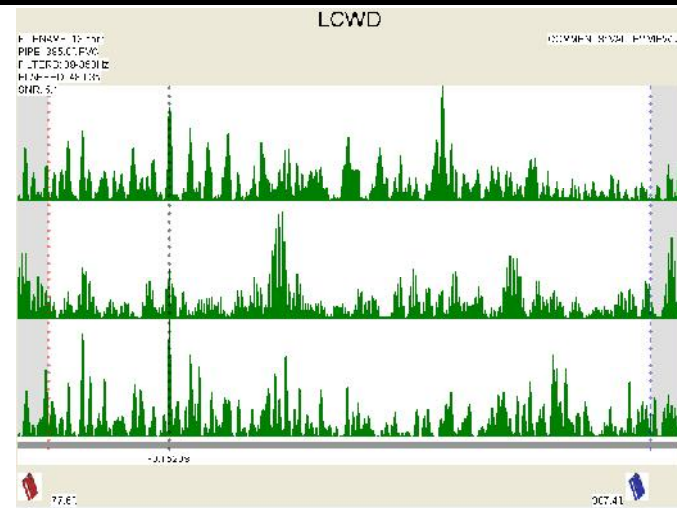
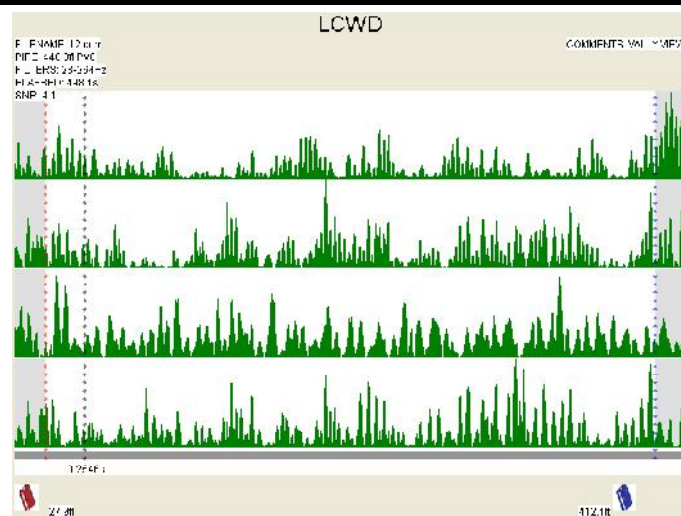
The Correlator program displays a "**Center Correlation**". The graph peak is in the center of the screen with equal footage on each side indicates the program sensor at a 50/50 point hears no sounds.

**The correlation has detected "No leaks".**

**Comments:** No leaks found



# Leak Detection Survey Results



## Survey Graph

The Correlator program allows for a "**Snapshot Option**". When the snapshot button is pressed during a correlation, the snapshot feature effectively enables the operator to compare noise levels at different points during the correlation process. When a leak is detected, the graph will have a peak in the same spot and will be located in the same spot on all snapshots. This will indicate the presence of a leak.

**The correlation has detected a "Leak(s)".**

The Correlator displays a peak in all snapshots graphs in the same spot but is not leak due too:

- ☐ Water passing through a meter.
- ☐ Running pumps.
- ☐ Electrical (Transformer).
- ☐ Illegal service.

**The correlation has detected "No leak(s)".**

X

The Correlator program snapshots all differ in graph peaks, this indicates flow due to pumping, pressure surges or momentary use of water through meter(s).

**The correlation has detected "No leak(s)".**

The Correlator program displays a "**Center Correlation**". The graph peak is in the center of the screen with equal footage on each side indicates the program sensor at a 50/50 point hears no sounds.

**The correlation has detected "No leaks".**

**Comments:** No leaks found

# Water System Map





# Water System Map

